

LESSON 3

FYI

SPRING BREAK



You know that schools usually have a one-week vacation in March or April called spring break. The school year starts in September, so by the time spring arrives, college and university students really deserve a break from school. Panama City Beach, Daytona Beach, and Fort Lauderdale (in the state of Florida), and South Padre Island (in the state of Texas) are some traditional spring break destinations, famous for their awesome parties. International destinations like the Bahamas or Cancun, Mexico, are also very popular with students. Every year in the spring, these places prepare for thousands (or hundreds of thousands) of college and university students to arrive, hoping to relax a bit and party* a lot.



* to party (verb) e.g., “It’s Friday night! Let’s party!”

LESSON 6

FYI

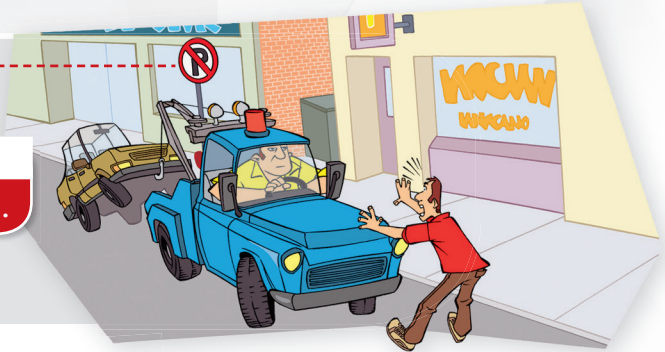
In the lesson, a boy slipped because he didn't notice this sign:



Signs are important because they can help prevent accidents. Here are some important street signs that are common in the U.S.

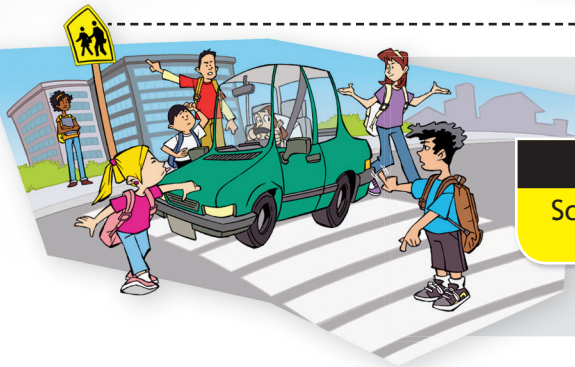
NO PARKING

Parking is not permitted.



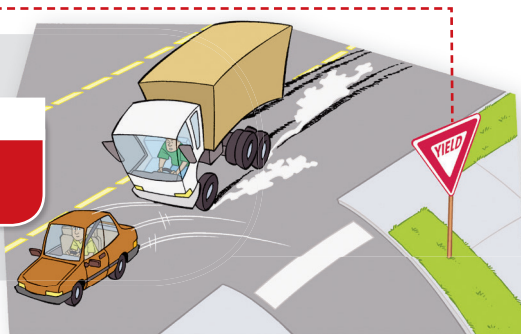
SCHOOL CROSSING

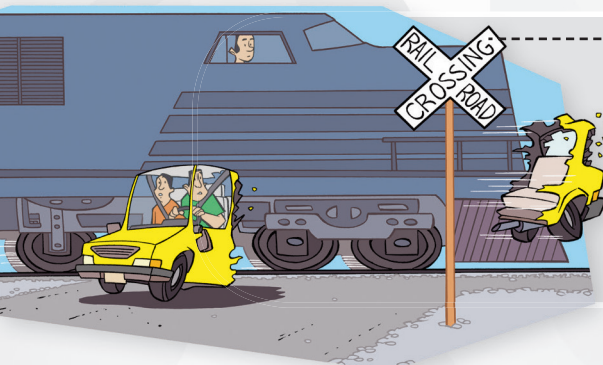
Schoolchildren cross the street at this location.



YIELD

To permit other vehicles on a principal road to go first.



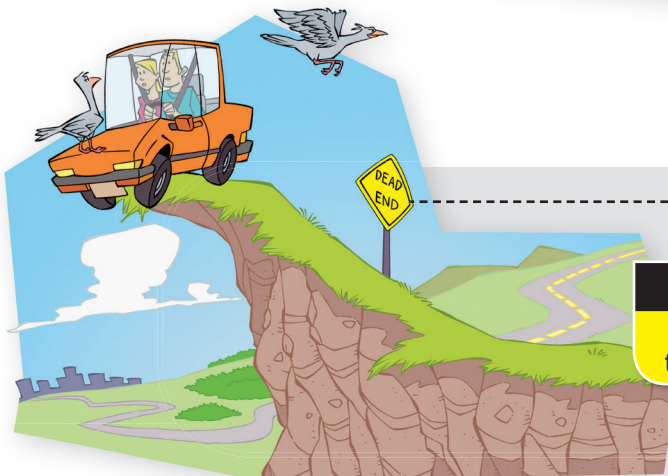
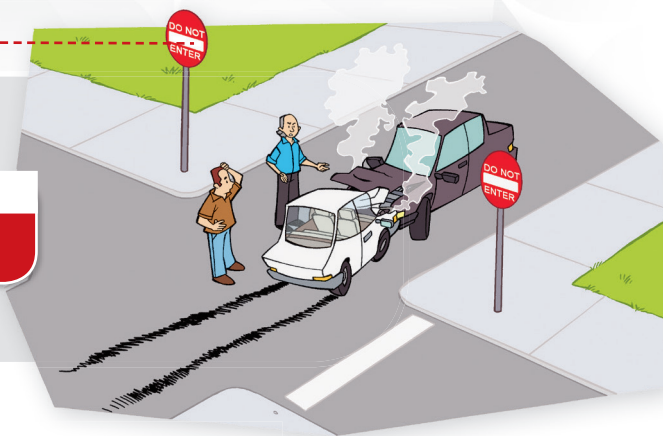


RAILROAD CROSSING

Trains cross the road at this location.

DO NOT ENTER

It is not permitted to enter.



DEAD END

This refers to a street that ends with no exit.